

## Joint cover/Bridge Profiles

The Special Profiles Joint covers are specialized profiles to cover, protect, embellish joints in the floor.

They are also used to connect floors of the same level, creating a technical yet design-packed bag. Made in various shapes (Semi-Round, Semi-Flat, T-Profiles), different sizes are available to satisfy any need.

Our proposals also include aluminum profiles, with satin or shiny anodized finishes. For more intensive uses and maximum safety of durability, Special Profiles then created steel Joint covers.

The technical data sheets of the available material are shown below, with details on the finishes, materials, dimensions, length of the bars.

Anodized satin or bright finishes, polished steel to adapt to any environment. Material: Aluminum or steel Finish: Satin, Brilliant or Glossy Height: various sizes / shapes available, as per technical drawing. Bar length: 2.7 m Quantity per pack: 10 bars AAA: Silver Anodized Aluminum ABA: Bright Anodized Aluminum

SPECIALSEMI-AL	Spessore Thickness T	Dimensioni Size WxH	Lunghezza Length	Cod. Art./Item Code	Naturale Natural	Profili Anodizzati Argento Silver Anodized Profiles				Quantità per conf. Packing Quantity
	mm	mm	m			Satinato Silver AAA	Brillante Bright Silver ABA	€ /m	€ /pz	pz/pcs
ALLUMINIO ALUMINIUM	1	30	2,70	SPSE00301AAA27						10
				SPSE00301ABA27						




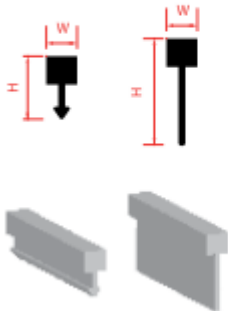
SPECIALSEMI-AL	1,3	25	2,70	SPSF00251AAA27						10
ALLUMINIO ALUMINIUM				SPSF00251ABA27						



SPECIALTI-AL		14X9	2,70	SPTI1409AAA27					10
ALLUMINIO ALUMINIUM				SPTI1409ABA27					
		20X9		SPTI2009AAA27					
				SPTI2009ABA27					



SPECIALBAND-AL		4,5X10	2,70	SPBA4510ANA27						10
<div>ALLUMINIO ALUMINIUM</div> <div></div>				SPBA4510AAA27						
				SPBA4510ABA27						
				SPBA0525ANA27						
				SPBA0525AAA27						
				SPBA0525ABA27						
				5X25						



	Spessore Thickness T	Dimensioni Size H	Lunghezza Length		Profili Anodizzati Argento Silver Anodized Profiles				Quantità per conf. Packing Quantity
					Satinato Silver AAA		Brillante Bright Silver ABA		
SPECIALTILT-AL	mm	mm	m	Cod. Art./Item Code	€/m	€/pz	€/m	€/pz	pz/pcs
ALLUMINIO ALUMINIUM	1	10	2,7	SPTL0010AAA27					10
				SPTL0010ABA27					



SPECIALTERMILT-AL	1	10	2,7	SPTT0010AAA27					10
ALLUMINIO ALUMINIUM		12,5		SPTT0010ABA27					
				SPTT0012AAA27					
				SPTT0012ABA27					



**STEEL**

	Spessore Thickness T	Dimensioni Size W - H	Lunghezza Length		Acciaio Lucido Polished Steel		Quantità per conf. Packing Quantity
SPECIALSEMI-AC	mm	mm	m	Cod. Art./Item Code	€/m	€/pz	pz/pcs

ACCIAIO STEEL

0,7	16	2,7	SPSE00167IL27			10
	30		SPSE00307IL27			



SPECIALSEMI-FLAT-AC	0,7	25	2,7	SPSF00257IL27			10
---------------------	-----	----	-----	---------------	--	--	----

ACCIAIO STEEL



SPECIALTILT-AC	0,7	10	2,7	SPTL00107IL27			10
----------------	-----	----	-----	---------------	--	--	----

ACCIAIO STEEL



	Spessore Thickness T	Dimensioni Size WxH	Lunghezza Length		Acciaio Lucido Polished Steel		Quantità per conf. Packing Quantity
SPECIALTERMILT-AC	mm	mm	m	Cod. Art./Item Code	€/m	€/pz	pz/pcs

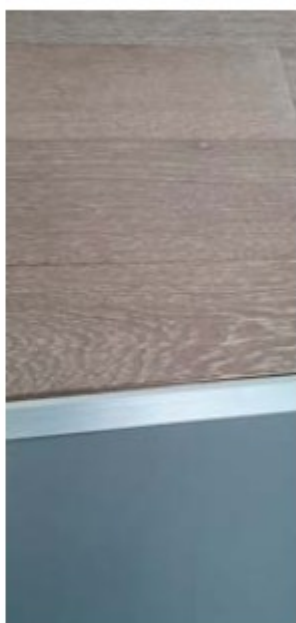
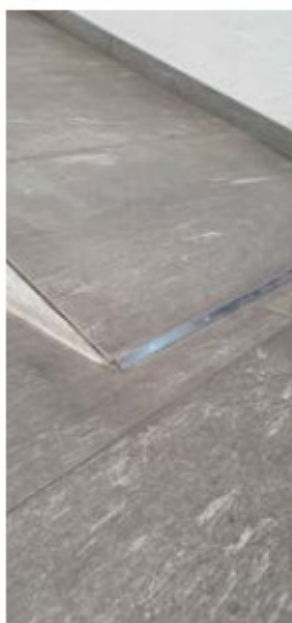
ACCIAIO STEEL

0,7	10	2,7	SPTT00107IL27			10
	12,5		SPTT00127IL27			



SPECIALTERMFLAT-AC	0,7	55x10	2,7	SPTF00107IL27			10
--------------------	-----	-------	-----	---------------	--	--	----

ACCIAIO STEEL



## **Main characteristics of the raw materials used by Special Profiles**

### **ALUMINUM**

Aluminum alloy (Al-Mg-Si) The profiles are made by extrusion or lamination and subsequent press bending. They have excellent resistance to the main chemical and atmospheric agents.

Surface treatments through the company's proprietary systems, transform the material into:

Anodized aluminum: anodic oxidation with 8-10 microns of oxide thickness.

Polished Aluminum: anodic oxidation with 8-10 microns of oxide thickness.

Painted Aluminum: powder coated, with about 100 microns of paint thickness.

Not recommended for floor use.

### **STAINLESS STEEL - AISI 304**

The profiles are made by rolling and subsequent press bending. They have excellent resistance to the main chemical and atmospheric agents and excellent mechanical resistance

Surface treatments through the company's systems, transform the material into:

Polished and bright steel. Use both on the wall and on the floor, in hospitals, food, industry.

• Attention: the cutting edges are not stainless

### **Rigid PVC** (Corner protectors)

Lead-free, impact-resistant, self-extinguishing rigid vinyl chloride. Good mechanical and abrasion resistance.

### **Co-extruded PVC** - Rigid / Soft (expansion joints)

Co-extruded rigid vinyl chloride with soft PVC, leadfree, shockproof, self-extinguishing. Excellent mechanical resistance, to abrasion.

### **PE-HD** (Tile spacers)

High density polyethylene, thermoplastic resin, excellent chemical stability and mechanical resistance. The high density (HD) increases its stiffness.

### **POLYPROPYLENE** (External square and round corners)

Thermoplastic polymer, semi-crystalline, with good mechanical and abrasion resistance.

## **Maintenance**

Avoid direct contact with concrete and its derivatives, if wet, descaling products and detergents that contain chlorine. Avoid using abrasive products that can scratch (abrasive sponges / metal wool). Immediately after laying proceed with a thorough cleaning of the surfaces with plenty of water / neutral / non-alkaline PH products, in particular remove cement, glue from the exposed surfaces.

## **Measures and tolerances**

All information and drawings contained in this catalog are non-binding and subject to change without notice.

All dimensional data refer to nominal dimensions, subject to mechanical tolerances, according to the En- 22768 ISO-2768 -m standard.

## **Special Profiles codes/Descriptions**

### **Raw Material**

A= Aluminium

F= Iron

P= PVC

I= Steel

O= Brass

### **Colours**

A=Silver

O=Gold

N=Black

B=White

G=Gray

B=Light Brown

M=Brown

### **Surface treatments**

N=Natural

A=Anodized

V=Painted

P=Brushed

B=Brilliant

Z=Zincked

L=Bright

O=Matt

S=SuperBright



---

***Special Profiles*** a brand of Mecc.Al Group

- Via dei Laghi, 4 - Calcinelli 61036 Colli al Metauro (PU) – Italia Tel. +39.0721.8764.163

Website : [www.special-profiles.com](http://www.special-profiles.com) e-mail: [specialprofiles@meccal.com](mailto:specialprofiles@meccal.com)

